

A robotic arm with a brush attachment is shown in a factory setting, cleaning a large sheet of material. The sheet has 'Rowmark' logos and text. The background is a blurred industrial environment.

# professional fabrication services & cut letters

we start. you finish.

**JOHNSON**PLASTICS  
PLUS

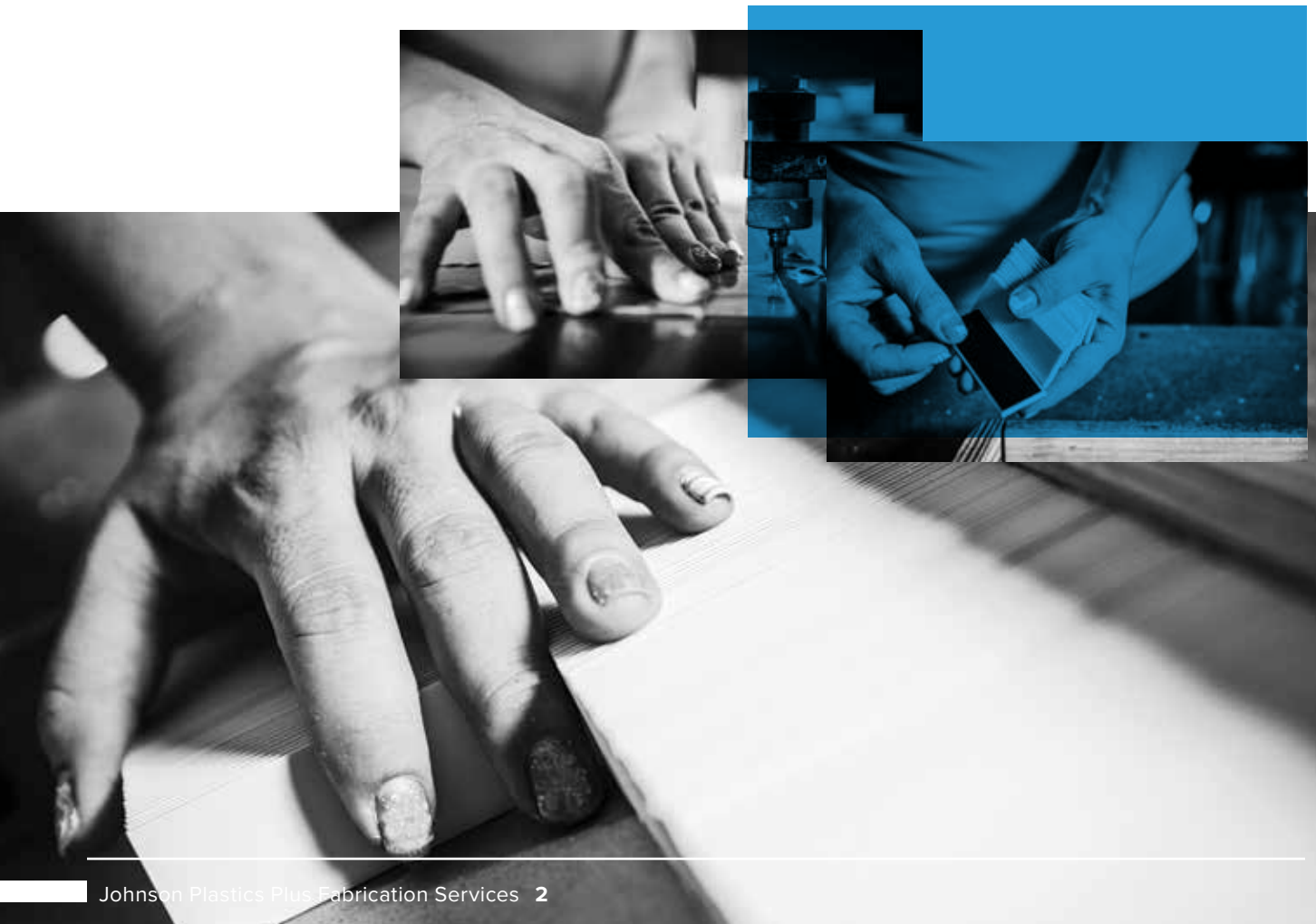
# an extension of your shop.

Thank you for trusting us to be a part of your team! This is an honor that we don't take lightly. We know that your time is valuable, so we've designed our Professional Fabrication Services so that you can have more resources to leverage your experience and equipment where it counts.

Let us help you extend your fabrication abilities so you can maximize your profitability. We provide a broad range of services, such as straight cuts, engraving, control panels, printed graphics and specialty cuts. No project is too small or too large for our skilled fabrication specialists to undertake.

We use only the finest materials and provide finished products that meet your project specifications and consistently meet or exceed industry standards.

It's time to take your business to new levels. You're already stepping in the right direction with Johnson Plastics' Professional Fabrication Services.



## services



Cuts & Material Beveling  
Custom Shapes  
Drilled Holes  
Adhesive Backing  
Heat Bending  
Polished Edges

## materials



Plastics  
Acrylics  
Aluminum  
Foam Board  
Brass  
Speciality Materials

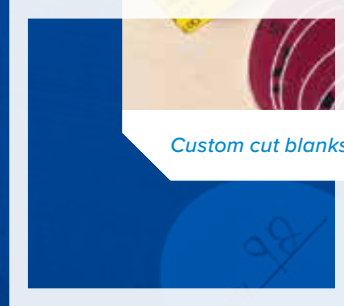
## decorative processes



UV-LED Printing  
Screen Printing  
Hot Stamping



*Custom cut blanks, badges, push button plates and more.*





# state-of-the-art

## Fabrication Equipment

- Routers with MultiVision Technology
- CO2 Lasers
- Fiber Lasers
- Rotary Engravers
- UV-LED Printers

**MultiVision System** uses automated camera recognition to automatically register printed sheets to be cut exactly. The fully integrated software and hardware combines seamlessly with our Multicam CNC Router machines and is ideal for cutting high volume printed badge jobs regardless of logo complexity or shape of badge.





# we cut to size. any size.

*Custom printed badges cut utilizing the MultiVision System.*

Feel confident that you can give your customers what they want, even when your equipment doesn't accommodate the project specifications.

Our state-of-the-art fabrication shop can perform any cut, specialty or standard task to get your large projects started.



*Cut-to-size service for .060" or .030" clear acrylic lenses.*



---

# endless customization opportunities.

From industrial to designer, letters and custom logos are cut to meet your needs, whether its routed for an extreme beveled look or precisely laser cut. Custom letters or logos are cut with precision from Rowmark manufactured sheet products made in the USA.

Our economical letters feature smooth, polished edges and are available in over 100 standard stock, popular and trending colors. We can also color-match your Pantone color(s) to meet your design specifications.

## Unlimited options:

- Over 100 standard stock colors or custom painted to match
- Professional laser cut polished edges
- Font choices are endless
- Letter sizes are available in one inch to two feet
- Acrylic cut letters are lightweight and easy to install
- Ready to ship in two days or less
- Available in five standard material thicknesses (1/32" | 1/16" | 1/8" | 1/4" | 1/2")



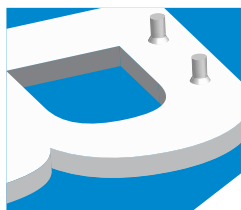
# precision cut letters and shapes.

Create custom looks with our letter and logo fabrication capabilities, whether it's a specialty typeface, or a unique dimensional appearance that is branded just for you. Our state-of-the-art fabrication equipment can rout or laser cut intricate type-faces and detailed logos. We make your vision come to life from 2-D drawings to unique 3-D letters and logos.

## Mounting options



Plain No Mount



Klipser



VHB Adhesive



3M Velcro



Acrylic Discs

## Installation guides/tools

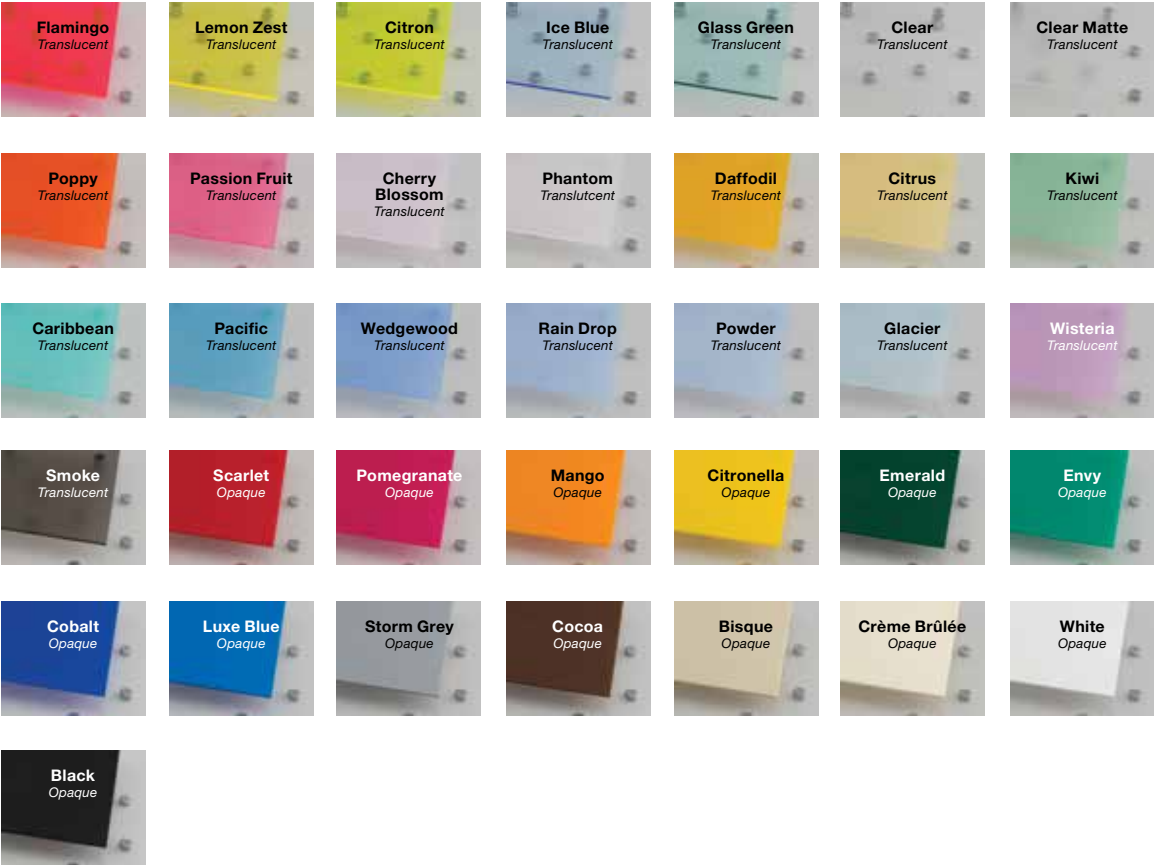


Stencil & Split  
Stencil Patterns



Drill Patterns





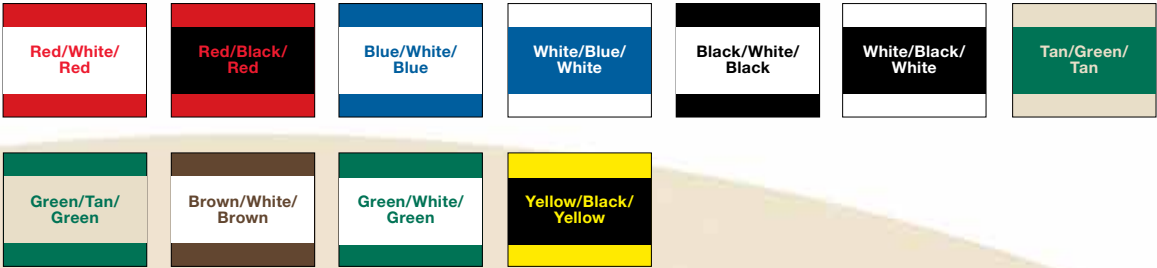
Red	Burgundy	Bordeaux	Passion Pink	Canyon	Orange	Yellow
Grass Green	Bright Green	Pine Green	Teal	Black Forest Green	Bahama Blue	Maui Blue
China Blue	Blue	Air Force Blue	Marine Blue	Antique Ivory	Sand	Ash
Parchment	Sandalwood	White	Bright White	Light Grey	Pearl Grey	Driftwood
Grey	Silver Grey	Charcoal Grey	Cinder	Beige	Candlewick	Taupe
Dark Brown	Med. Brown	Black	Copper	Deep Bronze	Gold	Silver
Graphite	Clear					



materials

Heavy Weights™

1/4" | 1/2" | Textured Finish | 3-ply



materials



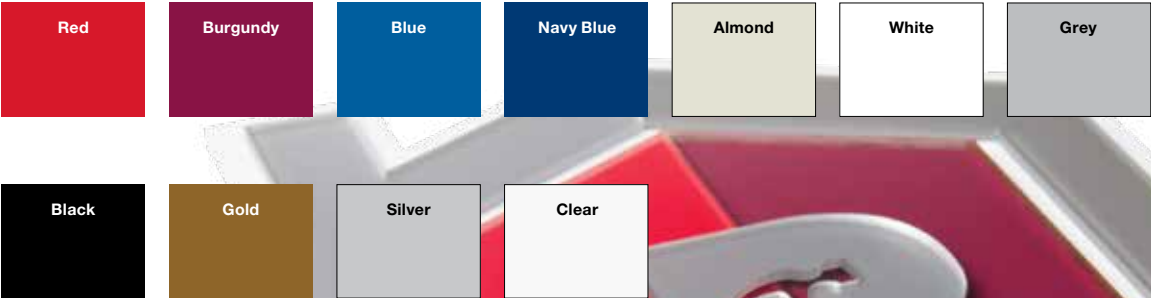
MetalGraph Plus®

1/16" | 1/8" | Textured Finish & Metallic Finish | 1-ply



ColorCast Acrylics™

1/8" | 1/4" | Matte Finish & Gloss Finish | 1-ply



materials



# add graphics & imagery.

Let our experienced graphic artists add logos, imagery or photography to your cut blanks. No matter the project, we have the right technology to meet your needs and budget. We can print oversized sheets and then cut and trim to the exact size for your project. All that's left for you to do is add customization and personalization!

# print processes based on your needs.

## UV LED printed graphics

UV-LED print technology amps up print projects with the capability of adding ink to an unlimited array of light, dark or metallic print media substrates with an impressive ability to add raised or textured elements with ink! UV-LED printing is perfect for full color graphics, project prototyping, small volume, highly custom or decorated projects.

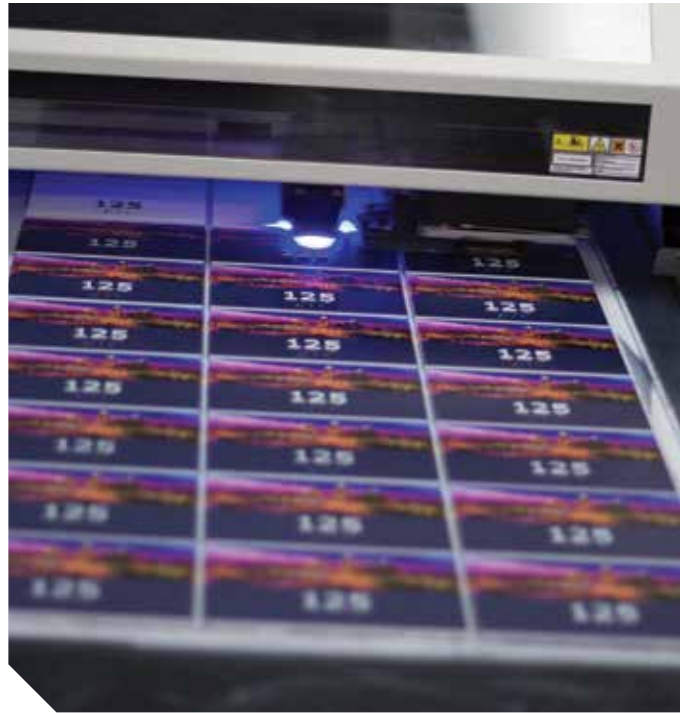


## Screen printing

For projects that require a high level of vibrancy, screen printing is the perfect option. We can add bright, crisp layers of ink for your detailed logos or artwork. Screen printing is a great solution for Pantone color matches and high volume projects.



# ses ur



## Hot stamping

When a project requires an extra touch of color, hot stamping may be the perfect choice for small volume projects. Hot stamping reproduces crisp graphics such as logos, metallic finishes or areas requiring a high-quality imagery achieved by colored films for a truly professional end result.



# custom services for unique needs...

## Adhesive application

For large volume projects, Rowmark can expertly apply the right adhesive for the project, whether it's adhesive for mounting projects directly to the wall, inside a sign frame or more. (3M9505 | 3M467MP | VHB)

## Beveling

Our equipment has the ability to add clean, even beveled edges to your project.

## Heat bending

Our fabrication team is experienced in heat bending plastic materials for all applications including table tents, pocket-badge fold-overs and cubicle wall signage.



*Utilizing our thermal press equipment our fabrication specialist can expertly heat fuse findings to your name badge projects.*

## Findings application

Our materials are popularly used in the name badge market. We have the largest selection in the industry of findings for name badges including magnetic, pin-backs, clutches and posts. Let us apply the best finding to your project.



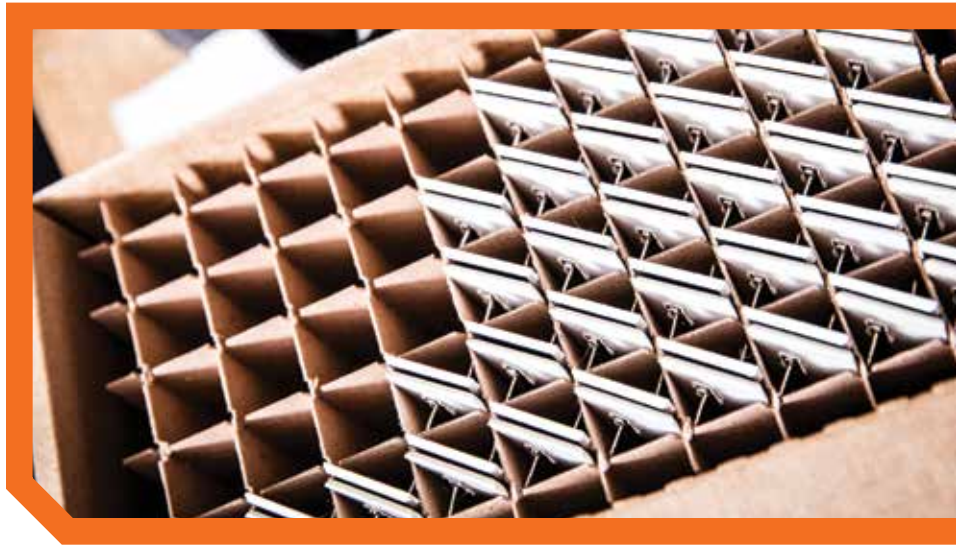
*Our fabrication specialist can custom heat bend signage applications or pre-apply adhesives for oversized projects.*

## Clean-inspected-packaged

Let us handle the fuss and mess. Our team takes great care throughout every step of the fabrication process to ensure you receive, clean, precise fabricated parts. After each run the part is cleaned, inspected and packaged to your specifications.

## Exceed your customers' deadlines

Custom signage and personalization projects are often afterthoughts for businesses, requiring quick turnaround times at a moment's notice. Now you can easily meet your customers' demanding timeframes with Johnson Plastics' fabrication and finishing services available to you. We specialize in providing quick turnaround times in five days or less, with flawless, professional results for you to finish, customize and personalize.





# get started today.

## services

### Decorative Processes

- UV-LED Printing
- Screen Printing
- Hot Stamping

### Specialty Shapes

- Cut Letters
- Custom Shapes

### Finishing

- Heat Bending
- Findings Application
- Adhesive Application
- Custom Packaging

## finishing options

Through Cuts

Polished Edges

Kiss Cuts

Beveled Edges

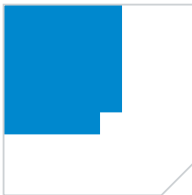
Straight Cuts



Beveled edges



Profile cuts



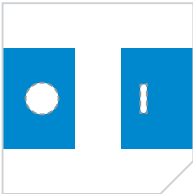
Notched corners



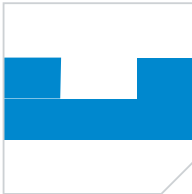
Scallop



Rounded corners

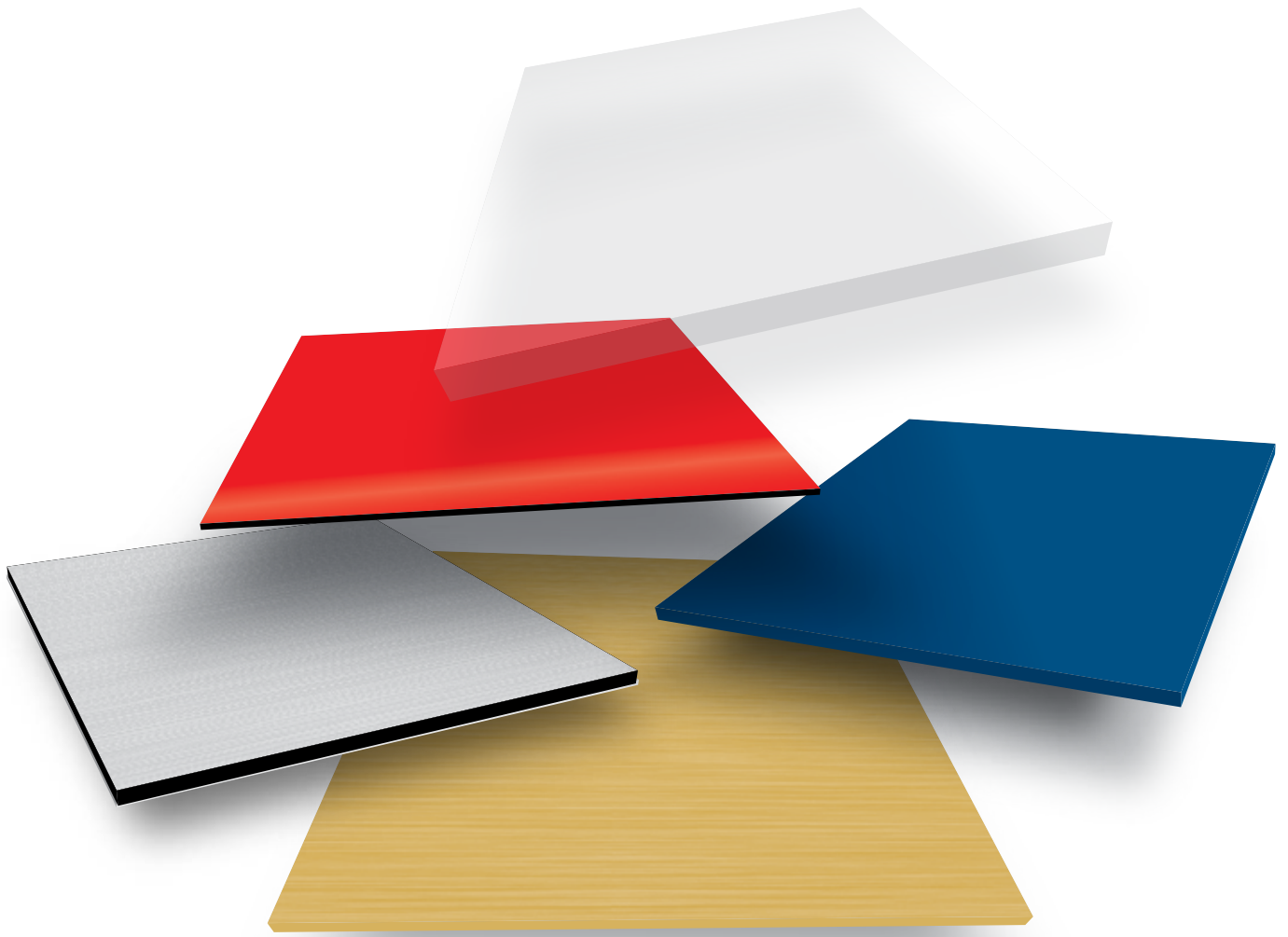


Holes / slots



Grooves for slide-ins

Don't see what you need?  
Contact us with your unique  
fabrication requests.

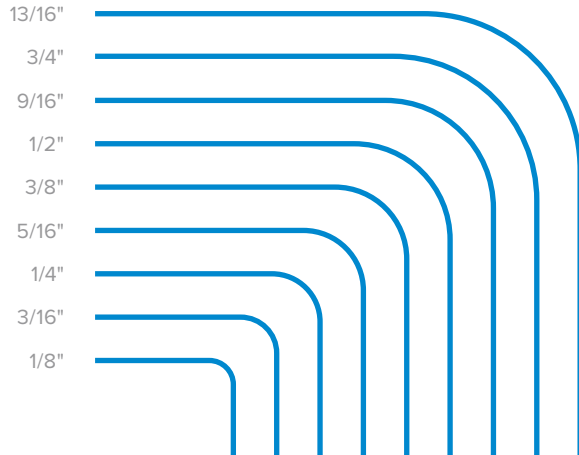


## select your materials.

- Engraving Stock (Acrylic & ABS)
- Acrylic Heavy Gauge
- Cell Cast Acrylic
- Gator Board
- Foam Board
- Coroplast
- Polycarbonate
- Neoprene
- Sintra
- Fiberglass Reinforced Plastic (FRP)
- Styrene
- TPE/Gasket material
- Polypropylene
- Sign Vinyl
- Komatex
- Aluminum
- Engravers Brass (lead brass)
- Dibond
- PVC
- Specialty Materials

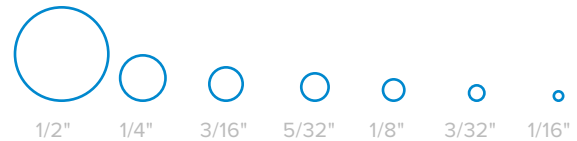
# quick reference

## Standard radius corners



## Standard drilled holes

- 1/64" increments up to 1/2" holes
- Larger hole sizes and precise hole placement are quoted upon request. Supply drawing for reference.



## Hole placement info

- Measurement in inches from the center of one hole to the center of the other hole. (line a)
- Measurement in inches from the center of the hole to the top of the material. (line b)
- Measurement in inches from the center of the hole to the edge of the material. (line c)



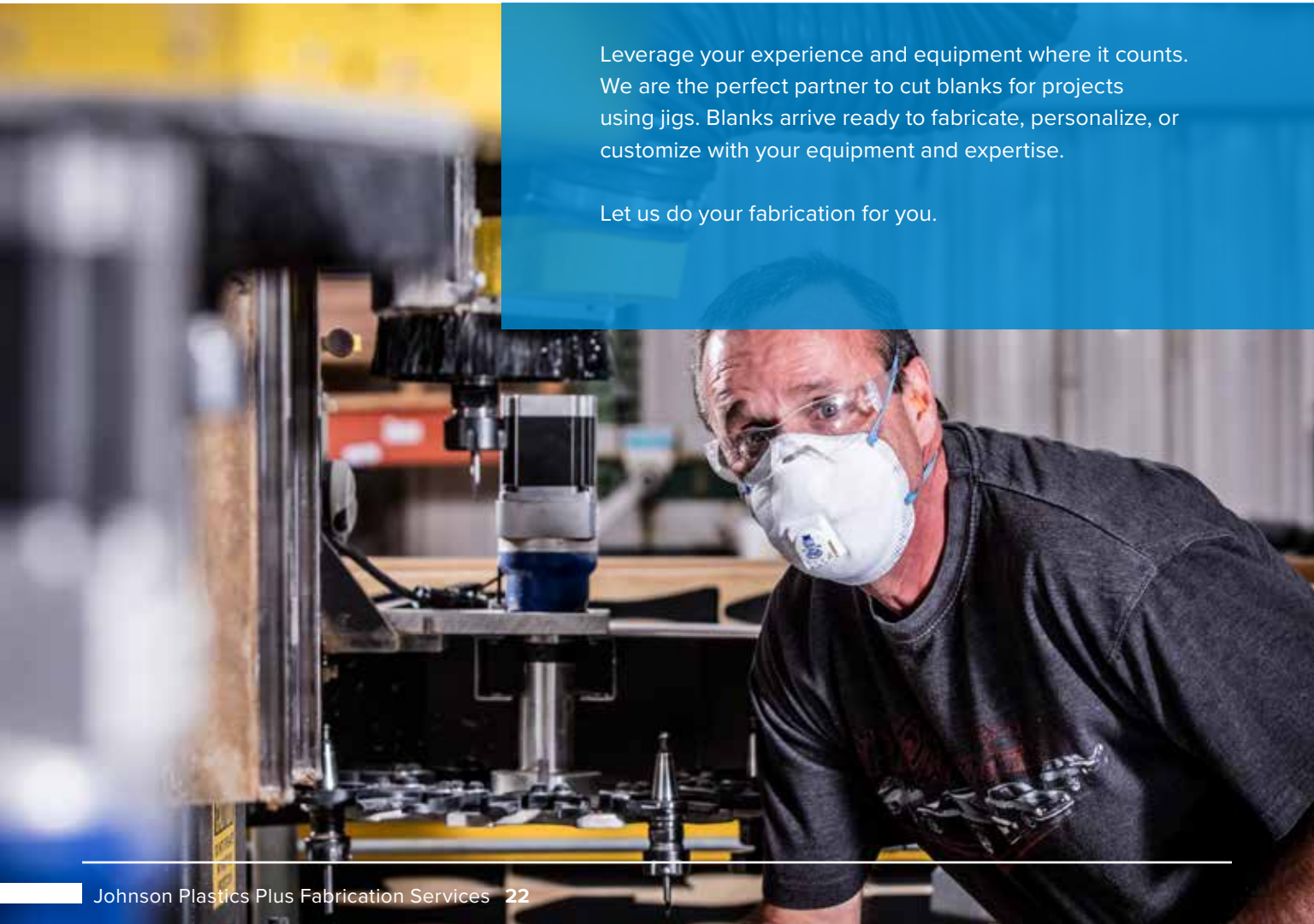




*Laser cut ColorHues™ Acrylic layered for a unique, dimensional signage application.*

---

# we prepare; you customize and personalize.

A photograph of a male worker in a dark grey t-shirt, safety glasses, and a white respirator mask. He is leaning over a complex industrial machine, likely a CNC router or mill, in a factory setting. The machine has various metal components, a blue coolant reservoir, and a spindle. The background is slightly blurred, showing other parts of the industrial environment.

Leverage your experience and equipment where it counts. We are the perfect partner to cut blanks for projects using jigs. Blanks arrive ready to fabricate, personalize, or customize with your equipment and expertise.

Let us do your fabrication for you.





## Artwork for fabrication

Our fabrication shop specializes in cutting custom and irregular shaped parts, panels or badges from a variety of substrates. Special cut jobs are priced by quotation only and are subject to minimum quantity amounts. Contact us for a quote on your next job.

## Artwork submission

- Vector-based artwork is preferred (.ai, .cdr, .eps, .pdf, .sci, .scv)
- Artwork should be provided with finished size for letters or logo
- Pantone (PMS) colors specified
- Mounting method

## Imprint color selection

Johnson Plastics has access to a wide variety of standard colors for hot-stamping foils and inks. If a color match is required, please provide a sample of the color to be matched or a Pantone (PMS) number with your order. Please keep in mind that not every color can be perfectly matched. Johnson Plastics will make every effort to match a color as closely as possible and provide a sample color for your approval if necessary.

## Custom and irregular shapes

All orders for fabricated materials are produced to your specifications, therefore, it is our policy that these items are non-returnable. Communication is the key to making sure this process flows smoothly. Please be sure to double-check all specifications and important information you provide to us.

# JOHNSON PLASTICS PLUS

**JPPLUS.COM • 1-800-869-7800**

Offices in Minnesota, Arizona, California, Georgia,  
Illinois, New York, Ohio, Oklahoma and Texas

