

JOHNSON PLASTICS
PLUS

SIMPLY

FRAMES & HOLDERS



Contents

WALL HOLDERS 04

| | |
|------------------------------------|----|
| 1/16" Aluminum Wall Holders | 04 |
| 1/16" Aluminum Ribbed Wall Holders | 07 |
| 1/16" Aluminum Double Wall Holders | 08 |
| 1/8" Aluminum Wall Holders | 09 |



CORRIDOR & METAL FRAMES 22

| | |
|-----------------------------------|----|
| Corridor & Corridor/Ceiling Mount | 22 |
|-----------------------------------|----|

DESK HOLDERS 10

| | |
|------------------------------------|----|
| 1/16" Aluminum Desk Holders | 10 |
| 1/16" Aluminum Ribbed Desk Holders | 11 |
| Raised Aluminum Desk Holders | 12 |



CUSTOM FRAMES 24

| | |
|---------------------------|----|
| Euro Series | 25 |
| Architect Aluminum Series | 26 |
| Premier Series | 27 |

DESK BASES 13

| | |
|-------------|----|
| Design | 13 |
| Architect | 14 |
| Traditional | 14 |
| Sign | 15 |
| Plastic | 16 |



MOUNTING & STANDOFFS 28

| | |
|-------------------------|----|
| Gripper | 28 |
| Surface Mount Kit | 28 |
| Gyford Simply Standoffs | 29 |

PLASTIC FRAMES & INSERTS 17

| | |
|------------------------------|----|
| Design Round | 17 |
| Design Square | 18 |
| Architect Round | 19 |
| Architect Square | 20 |
| Inserts for Architect Frames | 21 |



FRAME ACCESSORIES 30

| | |
|--|----|
| Suction Cups & Partition Pins | 30 |
| Cubicle Hangers, Simply Dual-Lock & Wire Clips | 31 |
| Corridor Hardware Mounting | 32 |

Simply Wall Holders

1/16" Material Thickness

Anodized aluminum Simply Wall Holders have a clean, modern look ideal for professional nameplates or wayfinding and directional signage.



Finished Example

Available in five anodized finishes:

*Polished anodized finish



Looking for a custom cut size?
Request a custom quote at sales@jpplus.com.

| Insert Height | Item Number | Color | Length |
|---------------|-------------|--------|--------|
| 3/4" | SW4.75S | Silver | 4" |
| | SW6.75S | Silver | 6" |
| | SW39.75S | Silver | 39" |

| Insert Height | Item Number | Color | Length |
|---------------|-------------|--------------|--------|
| 1" | SW41G | Rose Gold | 4" |
| | SW41S | Silver | 4" |
| | SW61B | Matte Black | 6" |
| | SW61G | Rose Gold | 6" |
| | SW61S | Silver | 6" |
| | SW81B | Matte Black | 8" |
| | SW81G | Rose Gold | 8" |
| | SW81S | Silver | 8" |
| | SW101MB | Matte Black | 10" |
| | SW101G | Rose Gold | 10" |
| | SW101S | Silver | 10" |
| | SW121S | Silver | 12" |
| | SW391B | Matte Black | 39" |
| | SW391SS | Satin Silver | 39" |
| | SW391S | Silver | 39" |

39" pieces do not come with mounting holes.

1/16" Material Thickness

| Insert Height | Item Number | Color | Length |
|---------------|-------------|--------------|--------|
| 1-1/2" | SW415S | Silver | 4" |
| | SW615B | Matte Black | 6" |
| | SW615S | Silver | 6" |
| | SW815B | Matte Black | 8" |
| | SW815G | Rose Gold | 8" |
| | SW815S | Silver | 8" |
| | SW1015G | Rose Gold | 10" |
| | SW1015S | Silver | 10" |
| | SW1215G | Rose Gold | 12" |
| | SW1215S | Silver | 12" |
| | SW3915B | Matte Black | 39" |
| | SW3915G | Rose Gold | 39" |
| | SW3915SS | Satin Silver | 39" |

| Insert Height | Item Number | Color | Length |
|---------------|-------------|--------------|--------|
| 2" | SW42S | Silver | 4" |
| | SW62MB | Matte Black | 6" |
| | SW62S | Silver | 6" |
| | SW82B | Matte Black | 8" |
| | SW82G | Rose Gold | 8" |
| | SW82SS | Satin Silver | 8" |
| | SW82S | Silver | 8" |
| | SW82YG | Yellow Gold | 8" |
| | SW92S | Silver | 9" |
| | SW102B | Matte Black | 10" |
| | SW102SS | Satin Silver | 10" |
| | SW102G | Rose Gold | 10" |
| | SW102S | Silver | 10" |
| | SW102YG | Yellow Gold | 10" |
| | SW122MB | Matte Black | 12" |
| | SW122G | Rose Gold | 12" |
| | SW122S | Silver | 12" |
| | SW122YG | Yellow Gold | 12" |
| 2-1/2" | SW392B | Matte Black | 39" |
| | SW392G | Rose Gold | 39" |
| | SW392SS | Satin Silver | 39" |
| | SW392S | Silver | 39" |
| | SW392YG | Yellow Gold | 39" |

| Insert Height | Item Number | Color | Length |
|---------------|-------------|--------------|--------|
| 2-1/2" | SW82.5G | Rose Gold | 8" |
| | SW82.5S | Silver | 8" |
| | SW392.5B | Matte Black | 39" |
| | SW392.5SS | Satin Silver | 39" |

39" pieces do not come with mounting holes.

| Insert Height | Item Number | Color | Length |
|---------------|-------------|--------------|--------|
| 3" | SW83G | Rose Gold | 8" |
| | SW83S | Silver | 8" |
| | SW103G | Rose Gold | 10" |
| | SW103S | Silver | 10" |
| | SW123B | Matte Black | 12" |
| | SW123G | Rose Gold | 12" |
| | SW123S | Silver | 12" |
| | SW393B | Matte Black | 39" |
| | SW393SS | Satin Silver | 39" |
| | SW393S | Silver | 39" |

| Insert Height | Item Number | Color | Length |
|---------------|-------------|--------------|--------|
| 4" | SW84G | Rose Gold | 8" |
| | SW84S | Silver | 8" |
| | SW104S | Silver | 10" |
| | SW124G | Rose Gold | 12" |
| | SW124S | Silver | 12" |
| | SW394B | Matte Black | 39" |
| 4-1/2" | SW394SS | Satin Silver | 39" |



1/16" Material Thickness - No Mounting Holes

Anodized aluminum Simply Wall Holders have a clean, modern look ideal for directory signage.



Finished Example

Available in three anodized finishes:



| Insert Height | Item Number | Color | Length |
|---------------|-------------|--------------|--------|
| 1" | SWNH31S | Silver | 3" |
| | SWNH41SS | Satin Silver | 4" |
| | SWNH61MB | Matte Black | 6" |
| | SWNH91MB | Matte Black | 9" |
| | SWNH121MB | Matte Black | 12" |

| Insert Height | Item Number | Color | Length |
|---------------|-------------|--------------|--------|
| 1-1/2" | SWNH615SS | Satin Silver | 6" |

| Insert Height | Item Number | Color | Length |
|---------------|-------------|--------------|--------|
| 2" | SWNH62SS | Satin Silver | 6" |
| | SWNH82SS | Satin Silver | 8" |

See pages 4-5 for 39" no holes wall options.

Ribbed 1/16" Material Thickness

Anodized aluminum ribbed Simply Wall Holders have a clean, modern look ideal for professional nameplates or wayfinding and directional signage.

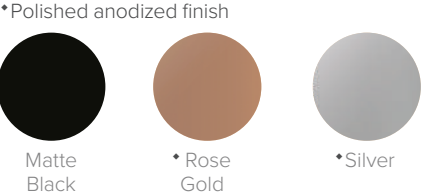


Two counter-sunk holes* for standard screw mounting.
*39" pieces do not come with mounting holes.



Finished Example

Available in three anodized finishes:



| Insert Height | Item Number | Color | Length |
|---------------|-------------|-------------|--------|
| 2" | SWR82B | Matte Black | 8" |
| | SWR82G | Rose Gold | 8" |
| | SWR82S | Silver | 8" |
| | SWR102B | Matte Black | 10" |
| | SWR102G | Rose Gold | 10" |
| | SWR102S | Silver | 10" |
| | SWR392B | Matte Black | 39" |
| | SWR392S | Silver | 39" |
| | SWR392G | Rose Gold | 39" |

39" pieces do not come with mounting holes.

Looking for a custom cut size?
Request a custom quote at sales@jpplus.com.



Double Wall 1/16” Material Thickness

Anodized aluminum Simply Double Wall Holders have a clean, modern look ideal for directory or wayfinding signage.



Finished Example

Available in three anodized finishes:



| Insert Height | Item Number | Color | Length |
|---------------|-------------|--------------|--------|
| 2" | SW811S | Silver | 8" |
| | SW1011S | Silver | 10" |
| | SW3911MB | Matte Black | 39" |
| | SW3911S | Silver | 39" |
| | SW3911SS | Satin Silver | 39" |

39” pieces do not come with mounting holes.

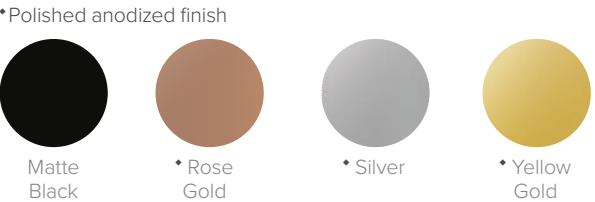
1/8” Material Thickness

Anodized aluminum Simply Wall Holders have a clean, modern look ideal for professional nameplates or wayfinding and directional signage.



Finished Example

Available in four anodized finishes:



| Insert Height | Item Number | Color | Length |
|---------------|-------------|-------------|--------|
| 2" | SW8218S | Silver | 8" |
| | SW8218B | Matte Black | 10" |
| | SW10218G | Rose Gold | 10" |
| | SW10218S | Silver | 10" |
| | SW10218YG | Yellow Gold | 10" |
| | SW12218S | Silver | 12" |
| | SW39218B | Matte Black | 39" |
| | SW39218G | Rose Gold | 39" |
| | SW39218S | Silver | 39" |
| | SW39218YG | Yellow Gold | 39" |

| Insert Height | Item Number | Color | Length |
|---------------|-------------|--------------|--------|
| 3" | SW123S18 | Silver | 12" |
| | SW393MB18 | Matte Black | 39" |
| | SW393SS18 | Satin Silver | 39" |
| | SW393S18 | Silver | 39" |

39” pieces do not come with mounting holes.

Looking for a custom cut size?
Request a custom quote at sales@jpplus.com.



Simply Desk Holders

1/16" Material Thickness

Anodized aluminum Simply Desk holders have a clean, modern look ideal for professional desk nameplates.



Finished Example

Available in five anodized finishes:

• Polished anodized finish

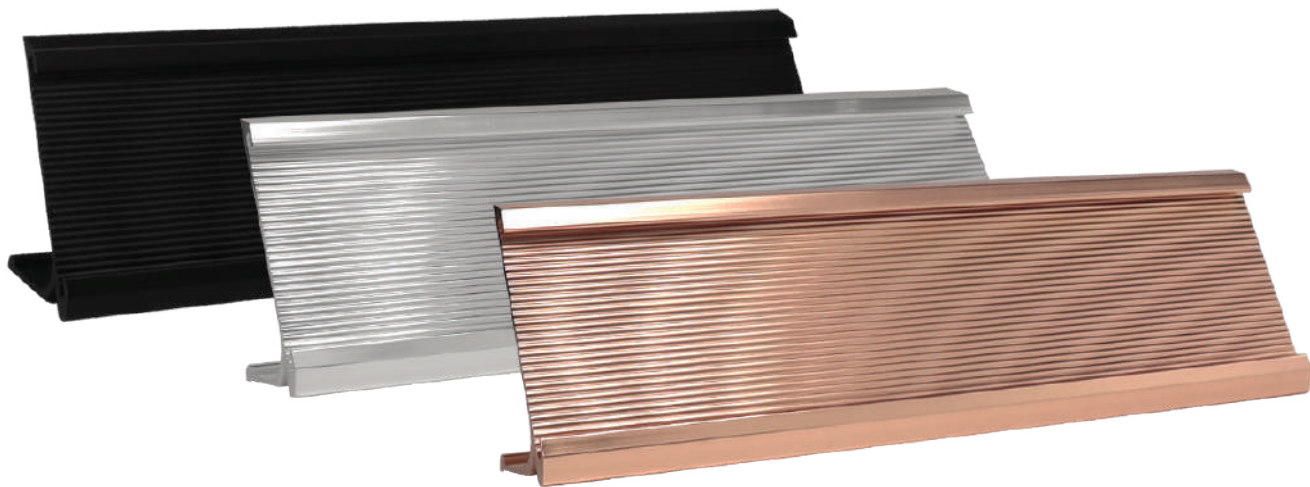


Looking for a custom cut size?
Request a custom quote at sales@jpplus.com.

| Insert Height | Item Number | Color | Length |
|---------------|-------------|--------------|--------|
| 2" | SD82B | Matte Black | 8" |
| | SD82G | Rose Gold | 8" |
| | SD82SS | Satin Silver | 8" |
| | SD82S | Silver | 8" |
| | SD82YG | Yellow Gold | 8" |
| | SD102B | Matte Black | 10" |
| | SD102G | Rose Gold | 10" |
| | SD102SS | Satin Silver | 10" |
| | SD102S | Silver | 10" |
| | SD102YG | Yellow Gold | 10" |
| | SD122MB | Matte Black | 12" |
| | SD122G | Rose Gold | 12" |
| | SD122SS | Satin Silver | 12" |
| | SD122YG | Yellow Gold | 12" |
| | SD392B | Matte Black | 39" |
| | SD392G | Rose Gold | 39" |
| | SD392S | Silver | 39" |
| | SD392YG | Yellow Gold | 39" |

Ribbed 1/16" Material Thickness

Anodized aluminum Simply Ribbed Desk Holders have a clean, modern look ideal for professional desk nameplates.



Available in three anodized finishes:

• Polished anodized finish



Finished Example

| Insert Height | Item Number | Color | Length |
|---------------|-------------|-------------|--------|
| 2" | SDR82B | Matte Black | 8" |
| | SDR82G | Rose Gold | 8" |
| | SDR82S | Silver | 8" |
| | SDR102B | Matte Black | 10" |
| | SDR102G | Rose Gold | 10" |
| | SDR102S | Silver | 10" |



Raised 1/16” Material Thickness

Anodized aluminum Simply Raised Desk Holders will take professional desk nameplates to the next level with an elevated base.



Available in two anodized finishes:



| Insert Height | Item Number | Color | Length |
|---------------|-------------|-----------|--------|
| 2" | SD28RG | Rose Gold | 8" |
| | SD28S | Silver | 8" |
| | SD210RG | Rose Gold | 10" |
| | SD210S | Silver | 10" |



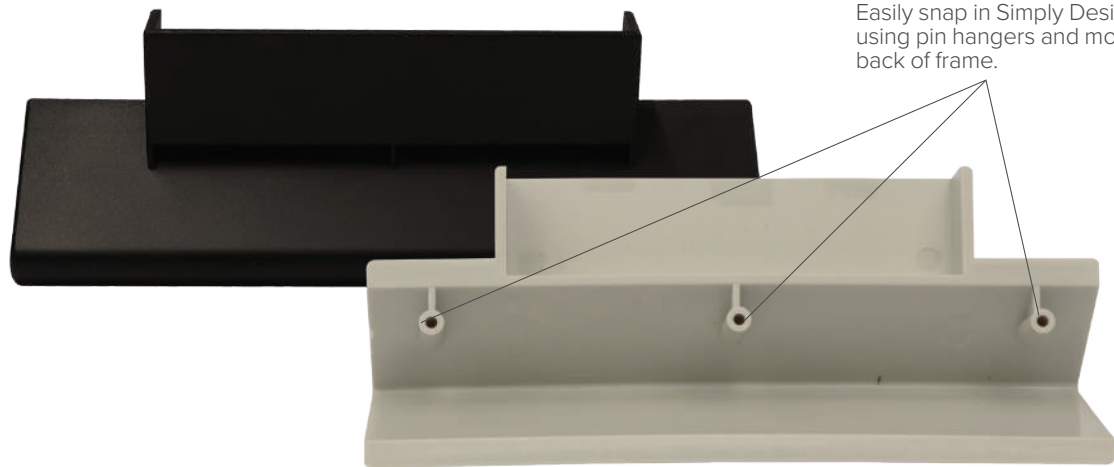
Finished Example



Simply Desk Bases

Simply Design Desk Base

Simply Design Desk Base is designed to easily attach to any 2"x 8" or 2" x 10" Simply Design plastic frame to create an easy desk sign. Easily snap in Simply Design frames using the pins and mounting holes on back of frame.

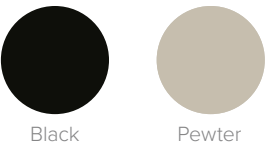


Easily snap in Simply Design plastic frame using pin hangers and mounting holes on back of frame.



Desk Base with Plastic Frame (Item #SAP28PWT) without insert.

Available in two finishes:



| Height | Item Number | Color |
|--------|-------------|--------|
| 2-1/2" | SAP26B | Black |
| | SAP26PWT | Pewter |



Desk Base with Plastic Frame (Item #SAP28PWT) with insert.

See pages 17-18 for Desk Frames options.



Simply Architect Desk Base

Simply Architect Desk Base is designed to easily attach to any 1.75" x 9.125" Simply Architect frame to create an easy desk sign. Easily snap in Simply Architect frames using the pins and mounting holes on back of frame.

Easily snap in Simply Architect frames using the pins and mounting holes on back of frame.



Item Number Color

| | |
|---------|-------|
| SD6INBB | Black |
|---------|-------|

Desk Base with Plastic Frame (Item #SAP28PWT) without insert.

Desk Base with Plastic Frame (Item #SAP28PWT) with insert.

Available in Black:




See pages 19-20 for Desk Frames options.

Simply Traditional Aluminum Desk Base


Anodized aluminum Traditional Desk Bases have a clean, modern look with a base channel and open top perfect for displaying message signs or nameplates. Accommodates inserts up to 1/16" thick. 2" maximum sign height.

Slide insert into slot.




Available in two anodized finishes:

*Polished anodized finish



*Rose Gold *Silver

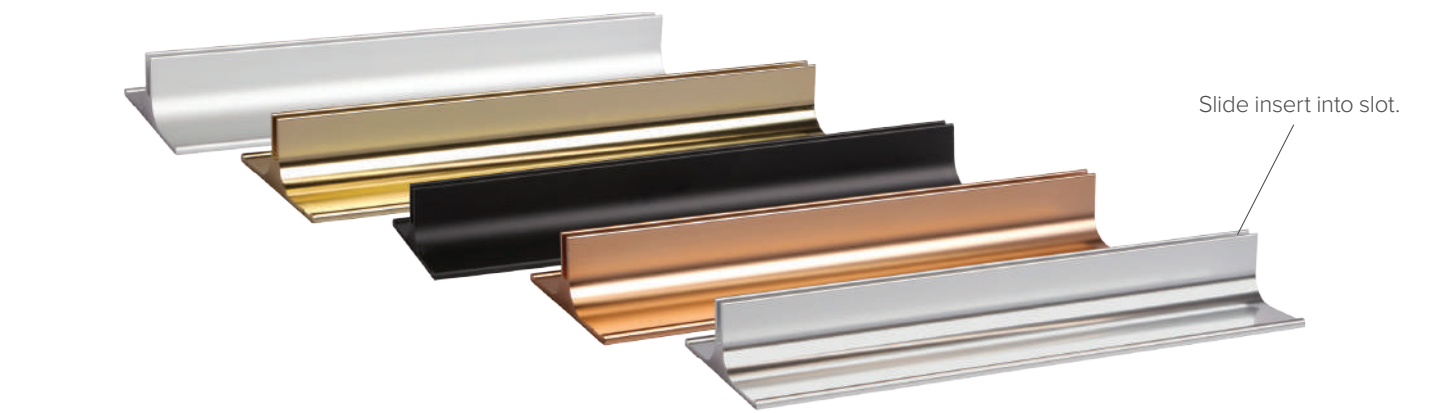
| Height | Item Number | Color | Length |
|--------|-------------|-----------|--------|
| 3/4" | SD.758S | Silver | 8" |
| | SD.758RG | Rose Gold | 8" |
| | SD.7510S | Silver | 10" |
| | SD.7510RG | Rose Gold | 10" |



Finished Example

Simply Aluminum Sign Base

Anodized aluminum Simply Anodized Sign Bases have a clean, modern look with a base channel and open top perfect for displaying message signs or nameplates. Accommodates inserts up to 1/8" thick.



Slide insert into slot.

Available in five anodized finishes:

*Polished anodized finish



Matte Black *Rose Gold Satin Silver *Silver *Yellow Gold

| Height | Item Number | Color | Length |
|--------|-------------|--------------|--------|
| 2-1/2" | SDB39B | Matte Black | 39" |
| | SDB39G | Rose Gold | 39" |
| | SDB39SS | Satin Silver | 39" |
| | SDB39S | Silver | 39" |
| | SDB39YG | Yellow Gold | 39" |



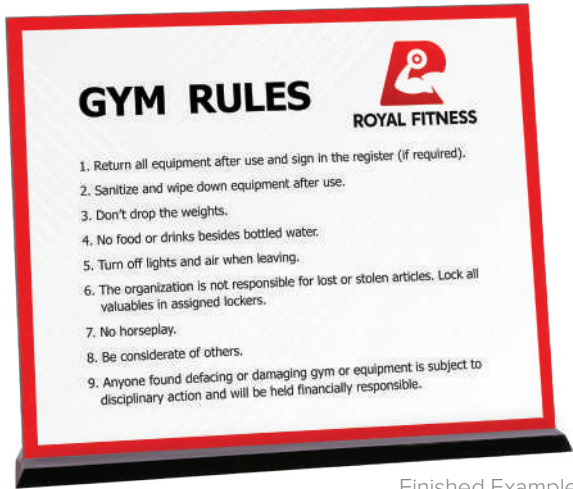
Finished Example

Looking for a custom cut size?
Request a custom quote at sales@jpplus.com.



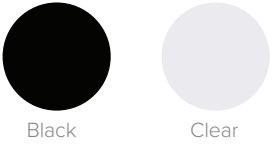
Simply Plastic Desk Base

Simply Plastic Desk Bases are the perfect low profile base for any sign or desk plate. The base has a single angled slot and no top channel which allows for various height inserts. Accommodates inserts up to 1/16" thick.



Finished Example

Available in two finishes:



| Item Number | Color | Length |
|-------------|-------|--------|
| SD82ABSB | Black | 8" |
| SD82ABSC | Clear | 8" |
| SD102ABSB | Black | 10" |
| SD102ABSC | Clear | 10" |

Simply Plastic Frames

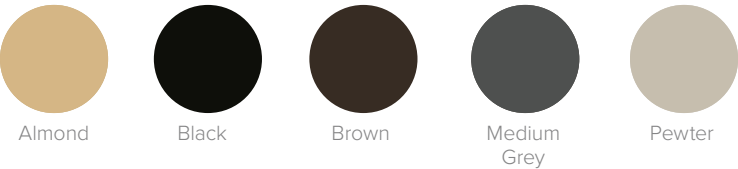
Simply Design Round Plastic Frames for 1/8" Material Thickness

Simply Design series is an injection molded plastic sign system featuring modern, 3/8" rounded corners. Designed with two keyholes on the back for solid surface mounting or pin hangers for easy fabric mounting to cubicle walls. Works great with Simply Dual-Lock and compatible with Simply Sign Desk Bases (sold separately).



Finished Example with Insert

Available in five finishes:



See page 13 for Desk Base options.

| Insert Height | Item Number | Color | Length |
|---------------|-------------|-------------|--------|
| 2" | SAP28AL | Almond | 8" |
| | SAP28B | Black | 8" |
| | SAP28BR | Brown | 8" |
| | SAP28MGR | Medium Grey | 8" |
| | SAP28PWT | Pewter | 8" |
| | SAP210B | Black | 10" |
| | SAP210BR | Brown | 10" |
| | SAP210MGR | Medium Grey | 10" |
| | SAP210PWT | Pewter | 10" |

| Insert Height | Item Number | Color | Length |
|---------------|-------------|-------|--------|
| 4" | SD44B | Black | 4" |

| Insert Height | Item Number | Color | Length |
|---------------|-------------|-------------|--------|
| 6" | SD66MD | Medium Grey | 6" |
| | SD66B | Black | 6" |

| Insert Height | Item Number | Color | Length |
|---------------|-------------|-------|--------|
| 8" | SD88B | Black | 8" |
| | SD66B | Black | 6" |

The frame size listed are inside dimensions.

Simply Design Square Plastic Frames for 1/8" Material Thickness

Simply Design series is an injection molded plastic sign system featuring modern, square corners. Designed with two keyholes on the back for solid surface mounting or pin hangers for easy fabric mounting to cubicle walls. Works great with Simply Dual-Lock and compatible with Simply Sign Desk Bases (sold separately).



Two keyholes for solid surface mounting or pin hangers.



Finished Example with Insert

Available in three finishes:



Black



Medium Grey



Pewter

| Insert Height | Item Number | Color | Length |
|---------------|-------------|-------------|--------|
| 2" | SD28B | Black | 8" |
| | SD210B | Black | 10" |
| | SD210MGR | Medium Grey | 10" |
| | SD210PWT | Pewter | 10" |

The frame size listed are inside dimensions.

See page 13 for Desk Base options.

Simply Architect Round Plastic Frames for 1/8" and 1/16" Material Thickness

Simply Architect is a series injection molded plastic frame available in 5/16" round or square corners that allows you to create a comprehensive sign system based on your customers request. Easily mix and match round and square cornered frames within the series to create a unified look and feel. Simply Architect frames are designed with two mounting holes on the back to easily attach to walls and other rigid surfaces. Works great with Simply Dual-Lock and compatible with Simply Architect Desk Bases and inserts (sold separately).



Two mounting holes for solid surface mounting or pin hangers.



Finished Example with Insert

| Insert Height | Item Number | Color | Length |
|---------------|-------------|--------|--------|
| 1.75" | SAPR1759AL | Almond | 9.125" |
| | SAPR1759B | Black | 9.125" |
| | SAPR1759BR | Brown | 9.125" |
| | SAPR1759PWT | Pewter | 9.125" |
| | SAPR1759WH | White | 9.125" |

The frame size listed are insided dimensions.

Available in five finishes:



Almond



Black



Medium Grey



Pewter



White

See page 14 for Desk Base options.



Simply Architect Square Plastic Frames for 1/8" and 1/16" Material Thickness

Simply Architect is a series injection molded plastic frame available in 5/16" round or square corners that allows you to create a comprehensive sign system based on your customers request. Easily mix and match round and square cornered frames within the series to create a unified look and feel. Simply Architect frames are designed with two mounting holes on the back to easily attach to walls and other rigid surfaces. Works great with Simply Dual-Lock and compatible with Simply Architect Desk Bases and inserts (sold separately).

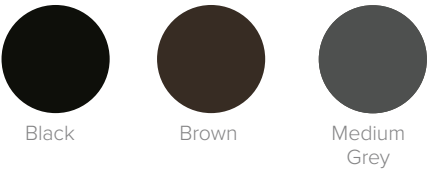


Finished Example with Insert

| Insert Height | Item Number | Color | Length |
|---------------|-------------|-------------|--------|
| 1.75 " | SAPS1759B | Black | 9.125" |
| | SAPS1759BR | Brown | 9.125" |
| | SAPS1759GR | Medium Grey | 9.125" |

The frame size listed are inside dimensions.

Available in three finishes:



See pages 14 for Desk Base options.



Simply Inserts for Architect Frames

Molded insert for Simply Architect Plastic Series. These are designed to easily snap in and out of frames for fast, changeable signs. Inserts are manufactured with the classic yet durable Rowmark ADA single-layer matte finish plastic or Rowmark LaserMax two-layer matte finish plastic. Can be personalized with laser engraving, rotary engraving or UV-LED printing.



Without Frame

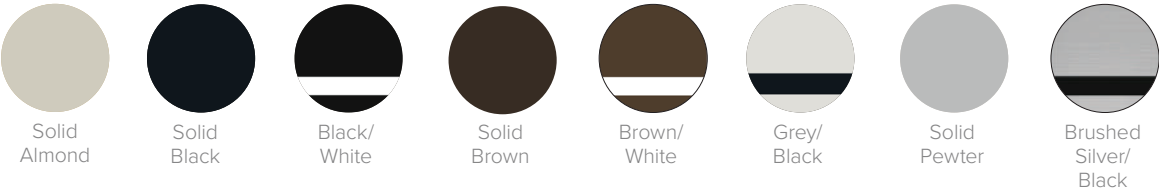


Finished Example with Frame (Item #SAPR1759PWT)

| Corner Finish | Item Number | Color | Size |
|---------------|---------------|----------------------|----------------|
| Round | SAPR1759IB/W | Black/White | 1.75" x 9.125" |
| | SAPR1759IBR/W | Brown/White | 1.75" x 9.125" |
| | SAPR1759IB/W | Brushed Silver/Black | 1.75" x 9.125" |
| | SAPR1759IGR/B | Grey/Black | 1.75" x 9.125" |
| | SAPR1759IAL | Solid Almond | 1.75" x 9.125" |
| | SAPR1759IB | Solid Black | 1.75" x 9.125" |
| | SAPR1759IBR | Solid Brown | 1.75" x 9.125" |
| | SAPR1759IPWT | Solid Pewter | 1.75" x 9.125" |

| Corner Finish | Item Number | Color | Size |
|---------------|---------------|--------------|----------------|
| Square | SAPS1759IB/W | Black/White | 1.75" x 9.125" |
| | SAPS1759IBR/W | Brown/White | 1.75" x 9.125" |
| | SAPS1759IGR/B | Grey/Black | 1.75" x 9.125" |
| | SAPS1759IAL | Solid Almond | 1.75" x 9.125" |
| | SAPS1759IB | Solid Black | 1.75" x 9.125" |
| | SAPS1759IBR | Solid Brown | 1.75" x 9.125" |
| | SAPS1759IPWT | Solid Pewter | 1.75" x 9.125" |

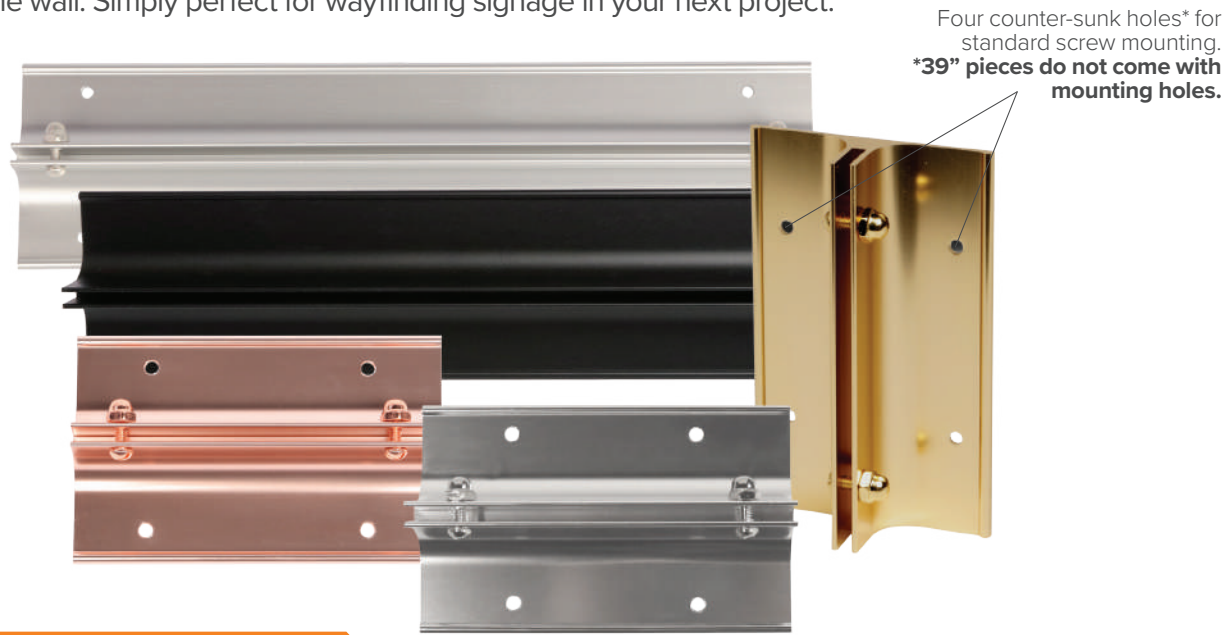
Available in eight finishes:



Simply Corridor & Metal Frames

Simply Corridor Wall Mount with 1/8" Slot

Simply Corridor Mount brackets are designed to hold single and double-sided signs at a 90 degree angle to the wall. Simply perfect for wayfinding signage in your next project.



Looking for a custom cut size?
Request a custom quote at sales@jpplus.com.

| Height | Item Number | Color |
|--------|-------------|-----------|
| 2" | SB2G | Rose Gold |
| | SB2S | Silver |

| Height | Item Number | Color |
|--------|-------------|-------------|
| 3" | SB3G | Rose Gold |
| | SB3S | Silver |
| | SB3YG | Yellow Gold |

| Height | Item Number | Color |
|--------|-------------|--------------|
| 4" | SB4G | Rose Gold |
| | SB4SS | Satin Silver |
| | SB4S | Silver |
| | SB4YG | Yellow Gold |

| Height | Item Number | Color |
|--------|-------------|--------------|
| 5" | SB6SS | Satin Silver |
| | SB5S | Silver |

| Height | Item Number | Color |
|--------|-------------|--------------|
| 6" | SB5SS | Satin Silver |
| | SB6S | Silver |

| Height | Item Number | Color |
|--------|-------------|--------------|
| 8" | SB8SS | Satin Silver |

| Height | Item Number | Color |
|--------|-------------|--------------|
| 10" | SB10SS | Satin Silver |
| | SBB10S | Silver |

| Height | Item Number | Color |
|--------|-------------|--------------|
| 12" | SB12SS | Satin Silver |

| Height | Item Number | Color |
|--------|-------------|--------------|
| 39" | SB39B | Matte Black |
| | SB39G | Rose Gold |
| | SB39SS | Satin Silver |
| | SB39S | Silver |
| | SB39YG | Yellow Gold |



Available in five anodized finishes:



Simply Corridor and Ceiling Bracket with 1/8" Slot

Simply Corridor and Ceiling Bracket are double sided and can be mounted perpendicular to the wall or the ceiling. With a concealed mounting system it is simply perfect for you next wayfinding or signage project. Double sided tape or adhesive is required for sign installation.



Finished Example



Available in Satin Silver:



| Item Number | Color | Length |
|-------------|--------------|--------|
| SBCC6SS | Satin Silver | 6" |
| SBCC8SS | Satin Silver | 8" |
| SBCC39SS | Satin Silver | 39" |

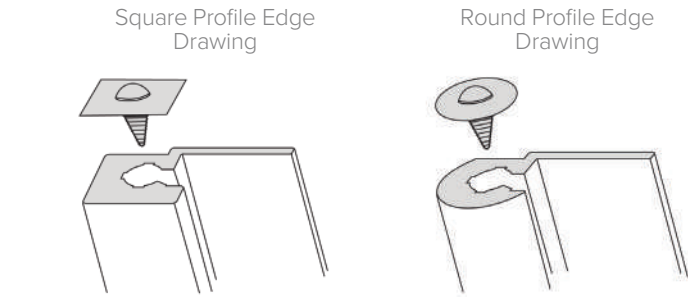
Looking for a custom cut size?
Request a custom quote at sales@jpplus.com.

Simply Custom Frames

Looking to create a custom frame?

Our SIMPLY Euro, Premier, and Architect Series frames can be custom designed to meet your specific requirements. Whether you're looking for a replacement frame to match an existing installation or needing to create an entirely new sign system, we can help you come up with the perfect solution for you and your customer.

Simply reach out to one of our friendly sign frame experts and we'll handle the rest! For more information, visit jpplus.com/simplyframes or contact us at sales@jpplus.com or 800-869-7800.



Available in five finishes:



Custom Simply Euro Series

All Custom Simply Euro Series are made to order.

Simply Euro Series Frames can be used as a single, stand-alone holder or an entire wayfinding system of frames and complex directories made to your specifications.

These frames are vandal and tamper-resistant and offers a choice of a modern, square edge or rounded/rolled profile edge to meet any office, industrial and institutional environments.

Features:

- Available in Matte Black, Rose Gold, Satin Silver, Silver and Yellow Gold
- Available in square and round edges
- Sign assemblies are stacked to create directories
- Works great with Simply Dual-Lock
- Accommodates inserts up to 1/16" thick

Typical Uses include:

- Wayfinding signs
- Directory signs

Interested in creating your own custom Simply Euro sign? Visit our website at info.jpplus.com/simplyeuro to get started.



Custom Simply Architect Aluminum Series

All Custom Simply Architect Aluminum Series are made to order.

Precision engineered and built to your size specifications, our Simply Custom Architect Aluminum Series are a contemporary alternative to display signs in office, industrial, and institutional spaces made to your specifications.

All frames are expertly crafted and made to order to fit any installation.

Features:

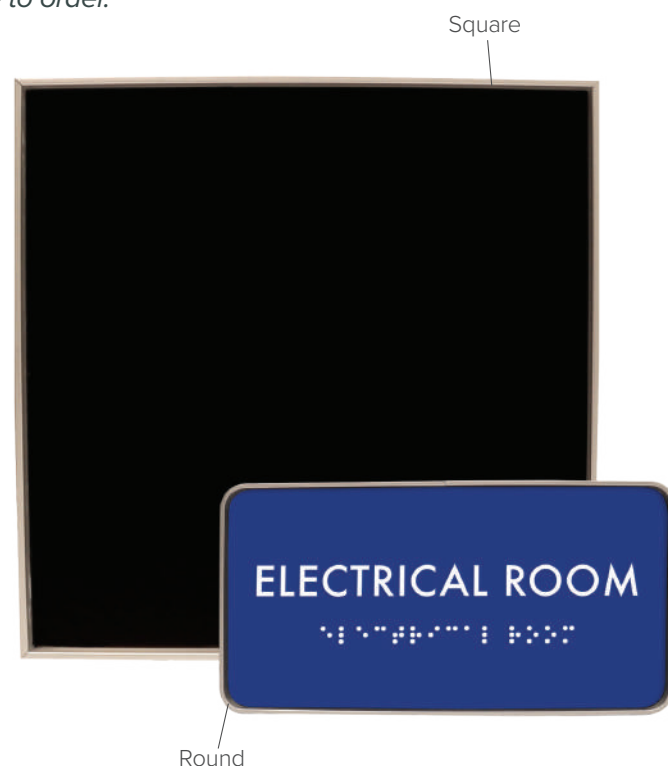
- Available in Matte Black, Rose Gold, Satin Silver, and Silver
- Available in square corners and rounded corners with 3/8" or 1/2" radius sign profiles
- Works great with Simply Dual-Lock
- Accommodates inserts up to 1/16" thick

Typical Uses include:

- Room number signs
- Wayfinding signs
- Warning signs

Interested in creating your own custom Architect Aluminum Series sign?

Visit our website at info.jpplus.com/simplyarchitect to get started.



Available in three anodized finishes:

• Polished anodized finish



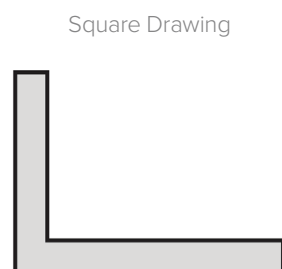
Matte Black



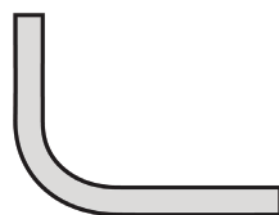
Satin Silver



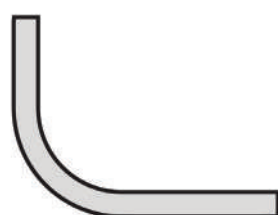
• Silver



Square Drawing



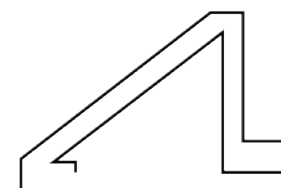
3/8" Radius Drawing



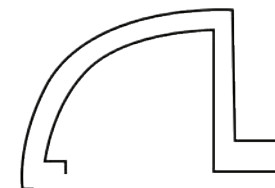
1/2" Radius Drawing



Beveled Drawing



Quarter Round Drawing



Available in five finishes:

• Polished anodized finish



Matte Black



• Rose Gold



Satin Silver



• Silver



Satin Yellow Gold

Custom Simply Premier Series

All Custom Simply Premier Series are made to order.

Featuring a classic, high-quality frame style, the Simply Premier Series is a popular choice for professional custom signage mounting solutions made to your specifications.

The frame corners are precision mitered by our craftsman and feature a waterproof acrylic backing board structure that makes the frames light-weight and easy to install. Available in beveled or quarter round edge frame style options.

Simply Premier sign frames work great in office, industrial, or institutional environments.

Features:

- Available in Matte Black, Rose Gold, Satin Silver, Silver and Satin Yellow Gold
- Available in beveled or quarter round edge frame style options
- Available with metal inside for magnetic inserts
- Works great with Simply Dual-Lock
- Accommodates inserts up to 5/16" thick

Typical Uses include:

- Lobby sign
- Mini directory signs
- Conference room signs

Interested in creating your own custom Simply Premier sign? Visit our website at info.jpplus.com/simplypremier to get started.

Mounting & Standoffs

Simply Sign Grippers

Simply Sign Grippers are the perfect solution for decorative sign mounting. This sleek aluminum gripper requires no drilling into your substrate making it versatile in all environments. Easy to mount, these holders permit a wide range of material thicknesses to be confidently secured. Mount singularly or in pairs. Accommodates inserts up to 5/16" thick.



Finished Example



Available in Satin Silver:



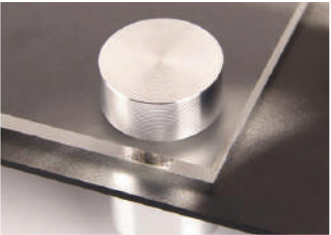
| Item Number | Color | Length |
|-------------|--------------|--------|
| SGL4S | Satin Silver | 4" |
| SGL8S | Satin Silver | 8" |
| SGL12S | Satin Silver | 12" |

Gyford Simply Standoffs

Standoffs are designed to mount signs, artwork, etc. at a fixed distance from the surface. Use Standoffs to add dimension to your designs.



Finished Example



| Cap Diameter | Item Number | Color |
|--------------|-------------|------------------|
| 1/2" | OEMKS-050AL | Aluminum |
| | OEMKS-050BL | Matte Black |
| | OEMKS-050MG | Matte Gold |
| | OEMKS-050MS | Matte Silver |
| | OEMK-050AL | Aluminum Kit |
| | OEMK-050BL | Matte Black Kit |
| | OEMK-050MG | Matte Gold Kit |
| | OEMK-050MS | Matte Silver Kit |

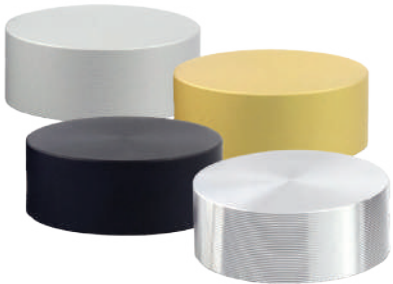
| Cap Diameter | Item Number | Color |
|--------------|-------------|------------------|
| 3/4" | OEMKS-075AL | Aluminum |
| | OEMKS-075BL | Matte Black |
| | OEMKS-075MG | Matte Gold |
| | OEMKS-075MS | Matte Silver |
| | OEMK-075AL | Aluminum Kit |
| | OEMK-075BL | Matte Black Kit |
| | OEMK-075MG | Matte Gold Kit |
| | OEMK-075MS | Matte Silver Kit |

Gyford Simply Standoff Surface Mount Kit

Gyford Simply Standoff Surface Mount kit is perfect to flush mount signs, artwork and panels to a wall. Use these Surface Mount Standoff kits to add slight dimension to your designs and give your project a finished look. Each kit includes a set of four (4) caps and mounting hardware for a variety of material thicknesses.



Finished Example



Available in four finishes:



Aluminum



Matte Black



Matte Silver



Matte Gold

| Cap Diameter | Item Number | Color |
|--------------|-------------|--------------|
| 1/2" | OEMK-FM50AL | Aluminum |
| | OEMK-FM50BL | Matte Black |
| | OEMK-FM50MG | Matte Gold |
| | OEMK-FM50MS | Matte Silver |

| Cap Diameter | Item Number | Color |
|--------------|-------------|--------------|
| 3/4" | OEMK-FM75AL | Aluminum |
| | OEMK-FM75BL | Matte Black |
| | OEMK-FM75MG | Matte Gold |
| | OEMK-FM75MS | Matte Silver |

| Cap Diameter | Item Number | Color |
|--------------|--------------|--------------|
| 1" | OEMK-FM100AL | Aluminum |
| | OEMK-FM100BL | Matte Black |
| | OEMK-FM100MG | Matte Gold |
| | OEMK-FM100MS | Matte Silver |

| Cap Diameter | Item Number | Color |
|--------------|-------------|------------------|
| 1" | OEMKS-100AL | Aluminum |
| | OEMKS-100BL | Matte Black |
| | OEMKS-100MG | Matte Gold |
| | OEMKS-100MS | Matte Silver |
| | OEMK-100AL | Aluminum Kit |
| | OEMK-100BL | Matte Black Kit |
| | OEMKS-100MG | Matte Gold Kit |
| | OEMKS-100MS | Matte Silver Kit |

Available in four finishes:



Aluminum



Matte Black



Matte Silver



Matte Gold

Frame Accessories



Suction Cups

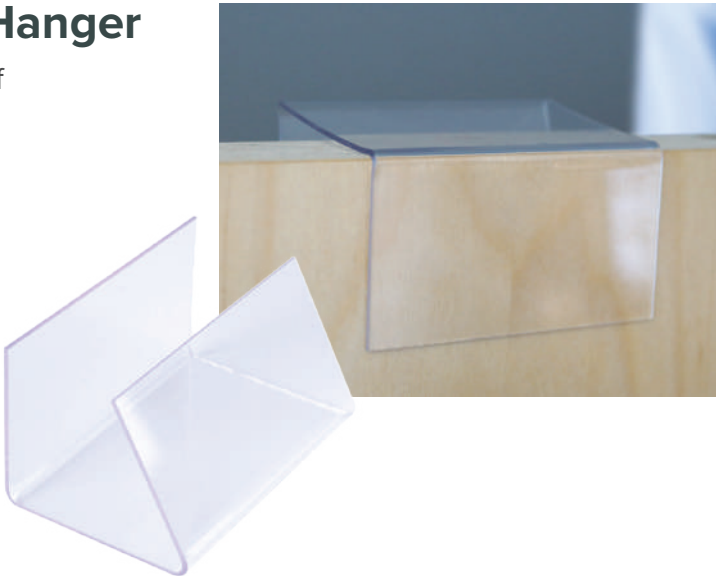
Sign inserts and lenses can easily be inserted and removed using convenient suction cups with removal hook. These suction cups include a hook for hanging signs on windows or glass doors, suction cups are a sign shop staple. They can easily remove sign inserts and lenses from frames.

| Item Number | Hook Material | Size | Recommended Products |
|-------------|---------------|--------|--|
| SHKSC | Plastic | 0.56" | Simply Curves Simply Design Simply Architect |
| SC78 | Metal | 0.875" | Simply Curves Simply Design Simply Architect |
| SC | Metal | 1.875" | Simply Curves Simply Design Simply Architect |

Simply Clear Plastic Cubicle Hanger

Mount office signs and nameplates over the top of partitions with this cubicle hanger. Two per case.

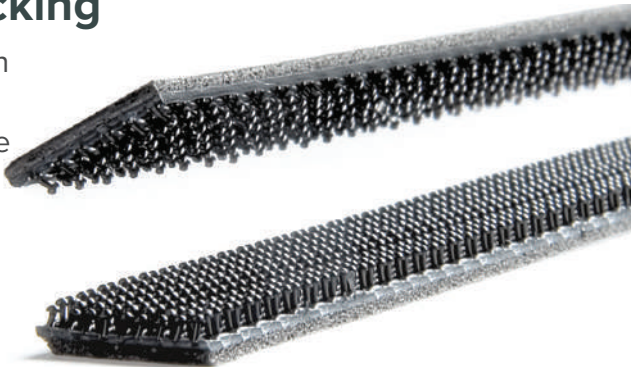
| Item Number | Recommended Products |
|-------------|---|
| PCUBHAN1 | Simply Wall 1/16" Simply Wall 1/8" Simply Ribbed Wall |



Simply Dual-Lock with Adhesive Backing

Fitting perfectly into the grooves on Simply Premier and Design frames, Simply Dual-Lock is a great way to secure your sign into its frame. The adhesive backed Dual-Lock give an audible snap to insure positive locking. Inserts are easily removed and changed using suction cups. Sold individually, must buy two to get both top and bottom.

| Item Number | Size | Recommended Products |
|-------------|------------|---|
| SDUALK | 1/2" X 12" | Simply Wall 1/16" Simply Wall 1/8" Simply Ribbed Wall |



Partitions

Partition pins make attaching nameplates to a cloth cubicle wall simple! These pins can also be used with other light weight objects that you are displaying in your office space. Most items require 2 pins to securely hang on a cubicle or partition wall.

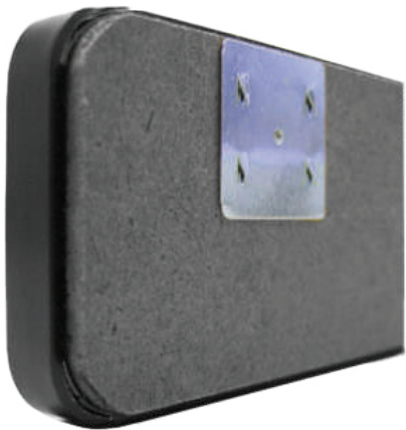
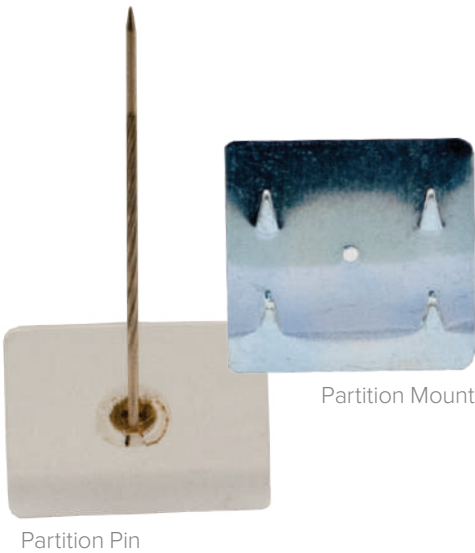
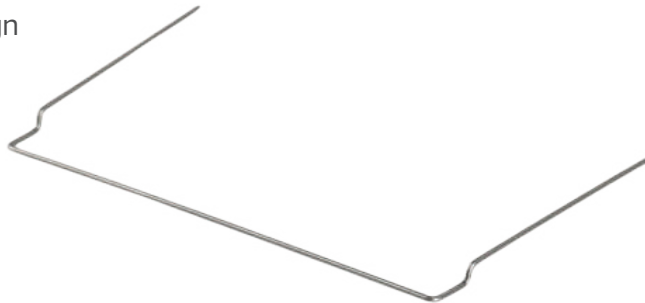
A barbed mounting pin designed for use on some of today's woven knit fabric coverings of partitioned office systems, cubicles, workstations and soft walls. Great for hanging sign frames, signs, pictures, and poster wall displays. A durable product that will withstand multiple relocations of the sign with minimal damage to woven knit fabrics. Barb pin is 1" x 1" with four barbs and is made of zinc plated steel.

| Item Number | Recommended Products |
|-------------|--|
| SP11 | Simply Wall 1/16" Simply Architect Plastic Simply Design |
| SP11A | Simply Wall 1/16" Simply Architect Plastic Simply Design |
| FANGS | Simply Wall 1/16" Simply Architect Plastic Simply Design |

Simply Wire Clip for Design Frame

Wire clips are designed to compliment the Simply Design Series frames and allow for easy mounting on fabric covered partitions.

| Item Number | Size | Recommended Products |
|-------------|------|----------------------|
| WCLIP3 | 3" | Simply Design Frame |
| WCLIP6 | 6" | Simply Design Frame |



Simply Corridor Substrate Hardware Mounting

Easily mount substrates to our Simply Corridor Brackets with this hardware. Four per pack.

| Item Number | Color | Recommended Products |
|-------------|-------------|----------------------|
| SBSCREWMB | Matte Black | Simply Corridor |
| SBSCREWG | Rose Gold | Simply Corridor |
| SBSCREWS | Silver | Simply Corridor |
| SBSCREWYG | Yellow | Simply Corridor |

Available in four anodized finishes:



SIMPLY ECONOMICAL.
SIMPLY IN-STOCK.
SIMPLY GUARANTEED.



EVERYTHING
YOU NEED, *all in one place!*